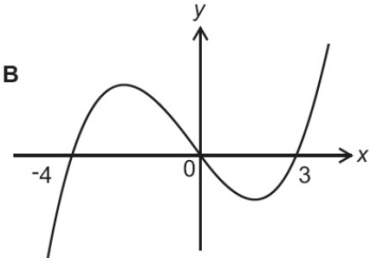
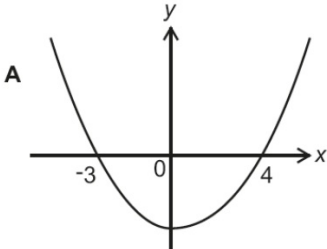


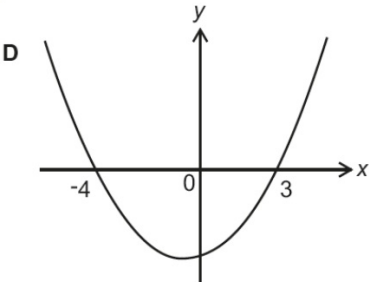
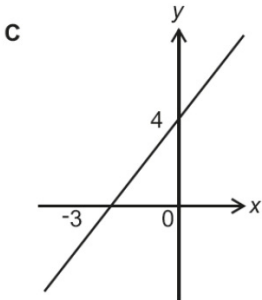
**A39...Recognising Graph Shapes...  
Foundation**

OCR

(c) Here are some graphs.



Not to scale

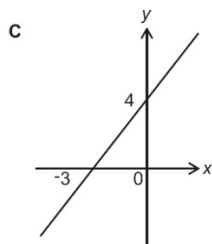
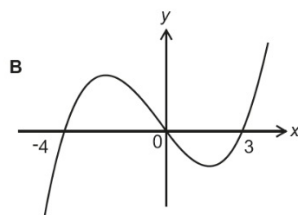
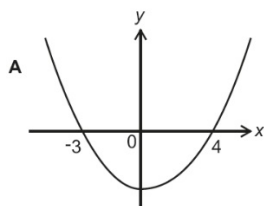


Complete the following:

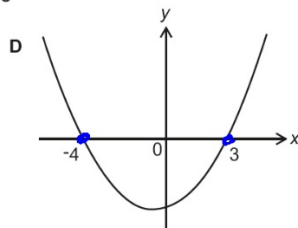
Graph ..... is the graph of  $y = (x - 3)(x + 4)$ .

Created by W Neill

(c) Here are some graphs.



Not to scale



$$y = (x-3)(x+4)$$

$$y = x^2 + 4x - 3x - 12$$

$$y = x^2 + 1x - 12$$

quadratic

$$y = (x-3)(x+4)$$

Solve

$$x=3 \quad x=-4$$

Roots ... cross x axis

Complete the following:

Graph D is the graph of  $y = (x-3)(x+4)$ .

Edexcel

AQA