

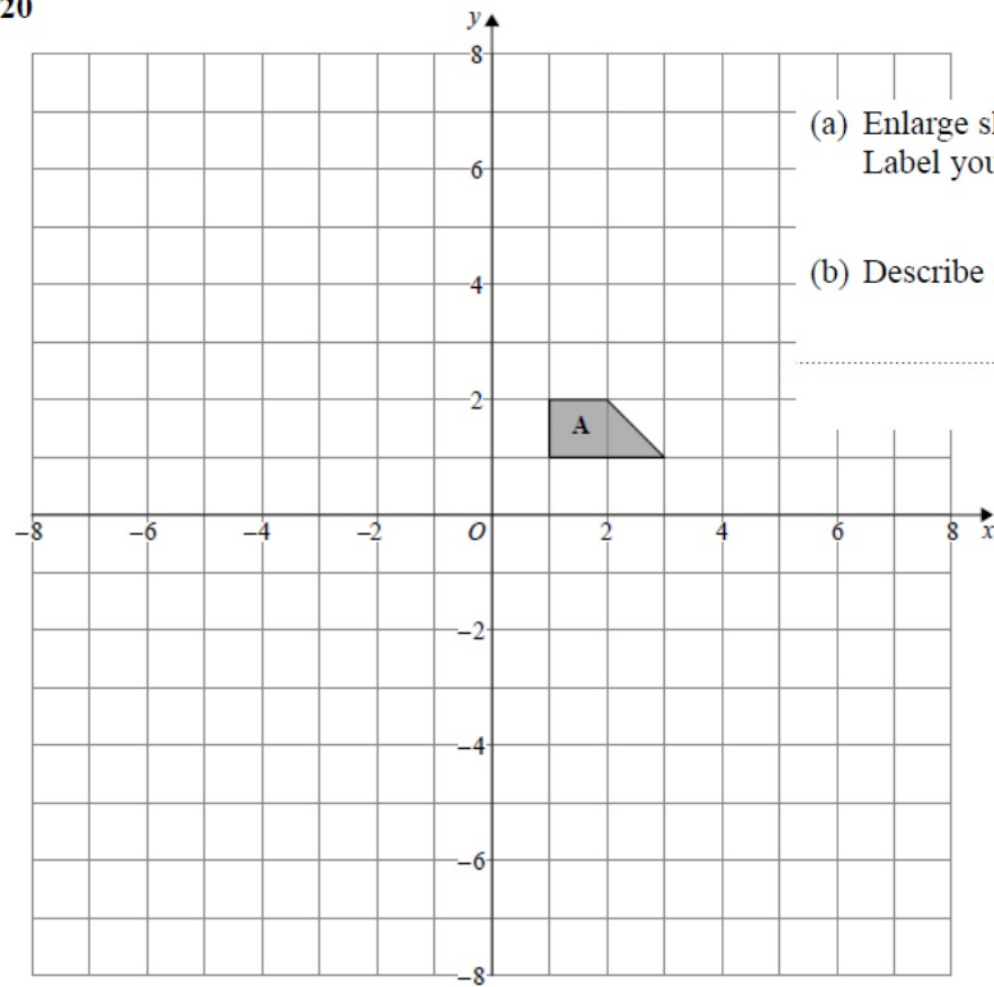
G54... (H) Transformations
negative enlargement

OCR

EDEXCEL

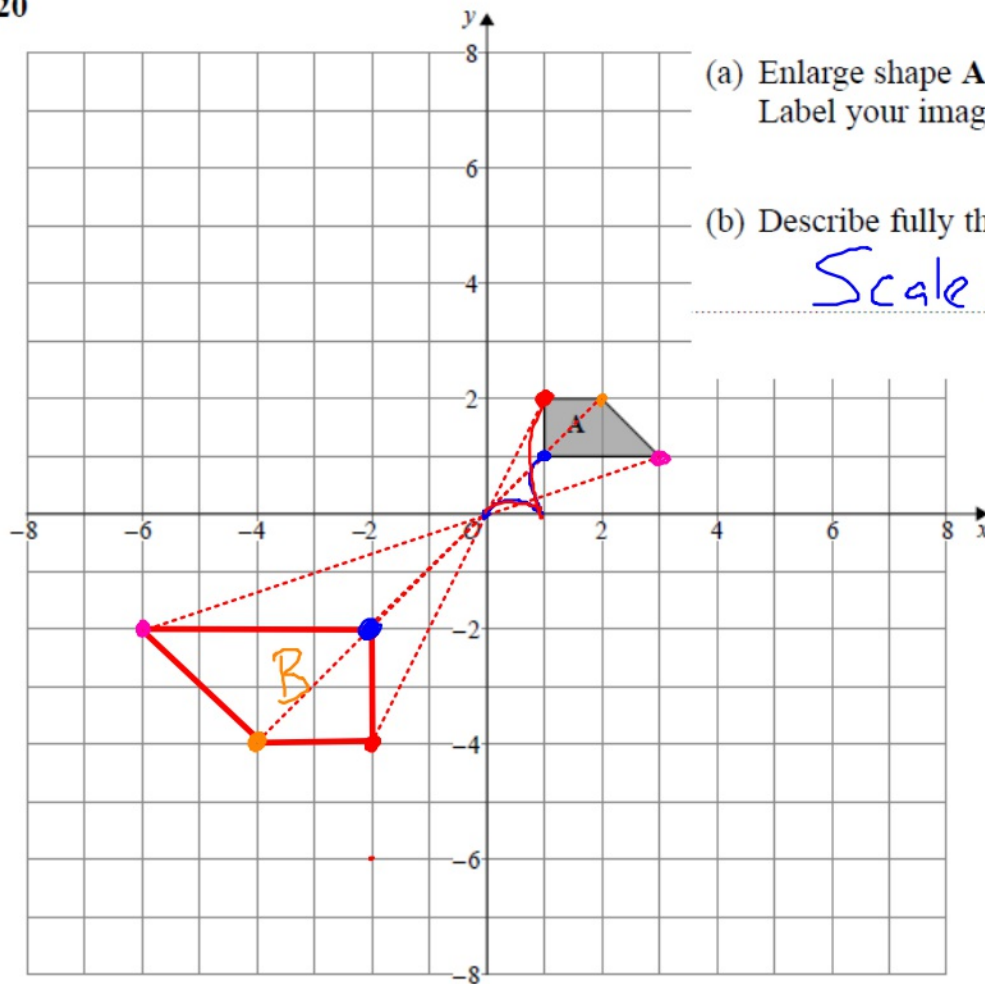
20

Video created by W Neill



(a) Enlarge shape **A** by scale factor -2 , centre $(0, 0)$
Label your image **B**.

(b) Describe fully the single transformation that will map shape **B** onto shape **A**.



- (a) Enlarge shape **A** by scale factor -2 , centre $(0, 0)$
Label your image **B**.

\rightarrow 2 ... twice as big

- (b) Describe fully the single transformation that will map shape **B** onto shape **A**.

Scale factor $-\frac{1}{2}$ from $(0, 0)$.

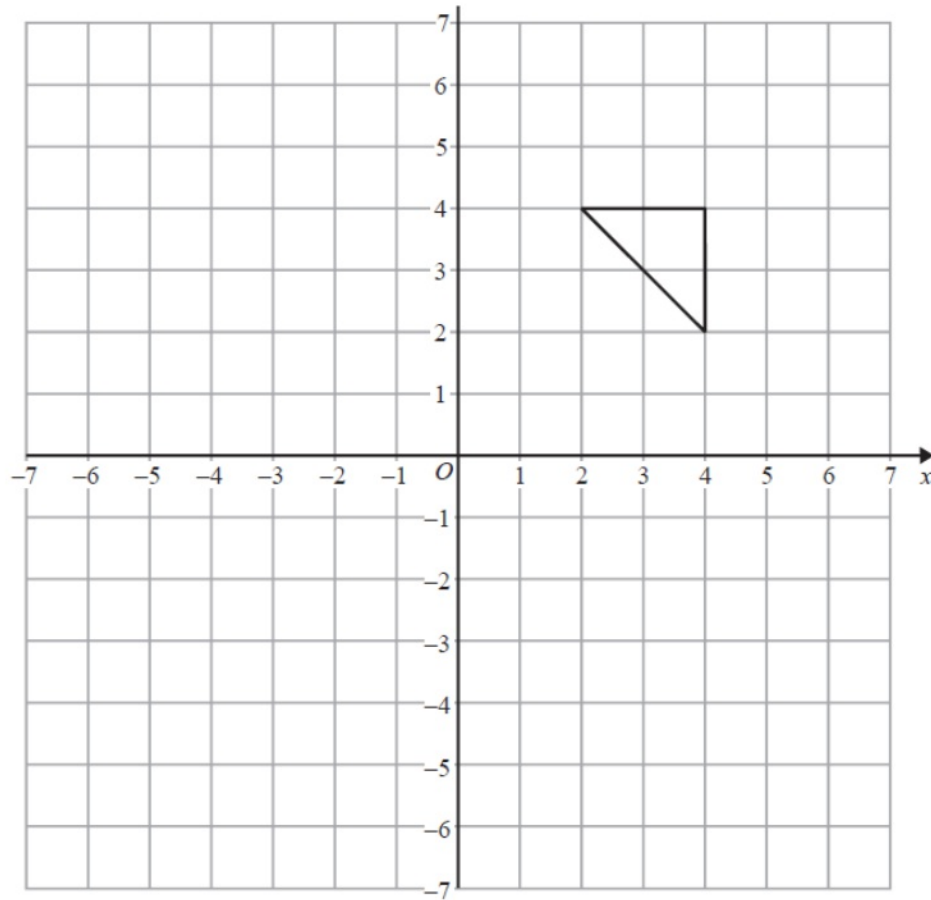
\rightarrow Inverse
Right 1 left 2
Up 1 down 2

Right 1 left 2
Up 2 down 4

(2)

(1)

Video created by W Neill



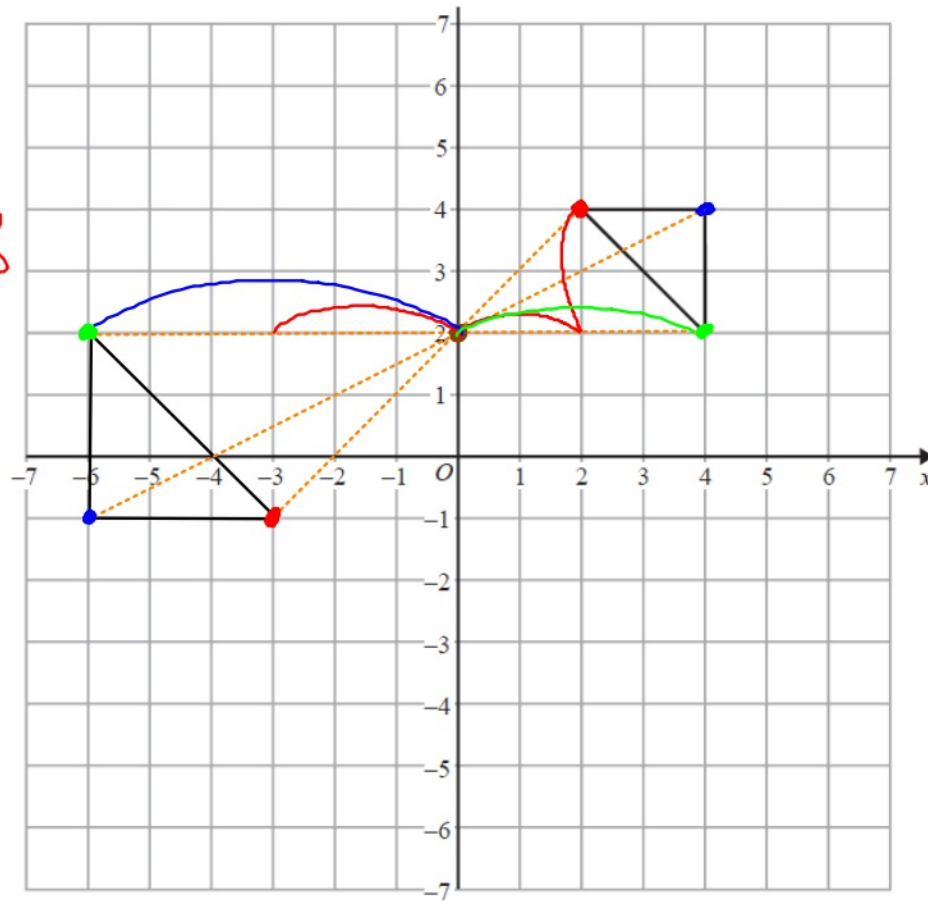
On the grid, enlarge the triangle by scale factor $-1\frac{1}{2}$, centre (0, 2)

(Total for Question 13 is 2 marks)

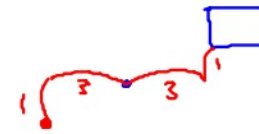
Video created by W Neill

$$2 \times 1\frac{1}{2} = 3$$

$$4 \times 1\frac{1}{2} = 6$$



- shape is inverted



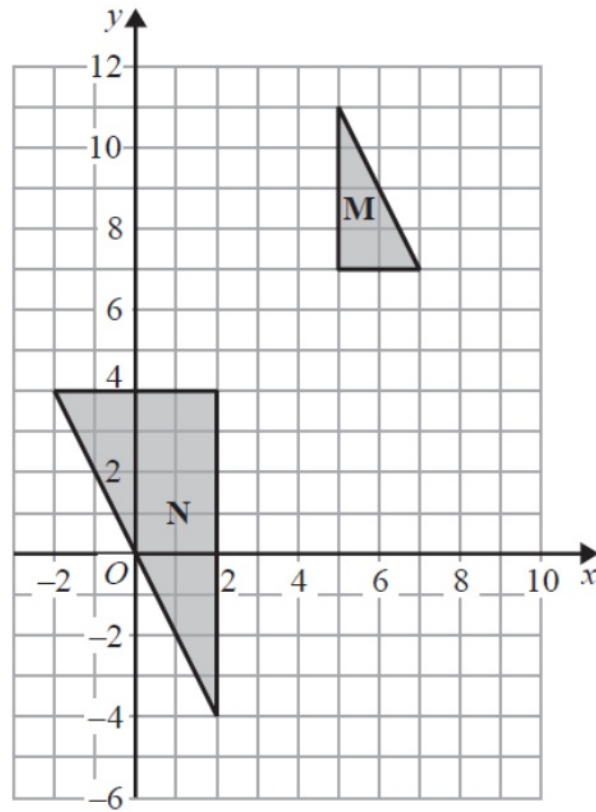
$$1\frac{1}{2}$$

On the grid, enlarge the triangle by scale factor $-\frac{1}{2}$, centre $(0, 2)$

(Total for Question 13 is 2 marks)

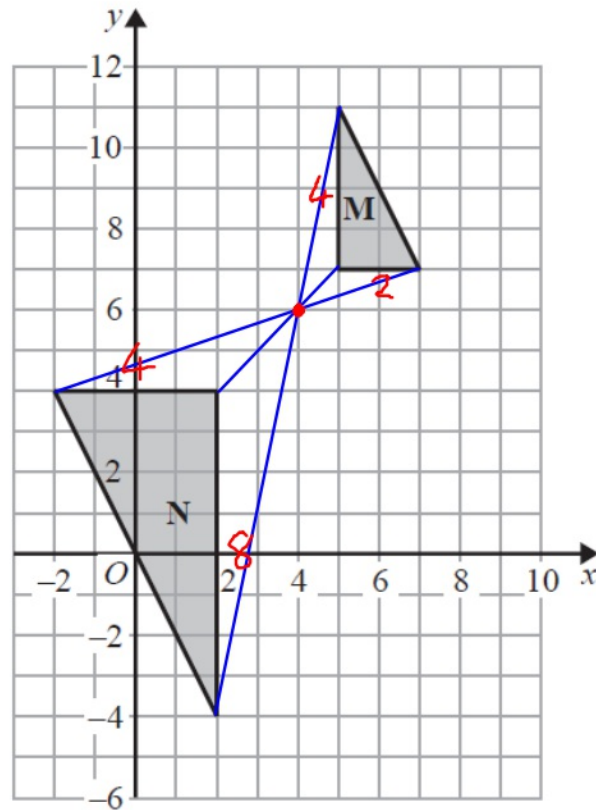
16

Video created by W Neill



Describe fully the single transformation that maps triangle **M** onto triangle **N**.

(Total for Question 16 is 2 marks)



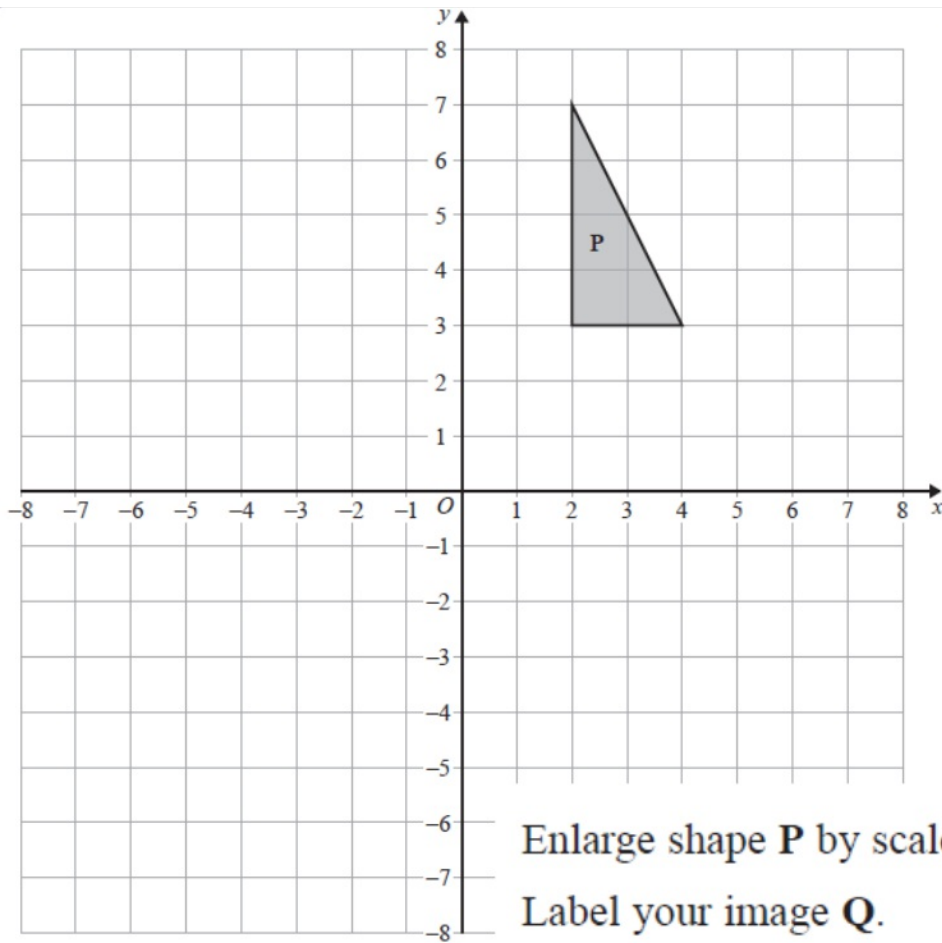
Enlargement
by Scale factor -2
from centre $(4, 6)$

Describe fully the single transformation that maps triangle **M** onto triangle **N**.

(Total for Question 16 is 2 marks)

18

Created by W Neill

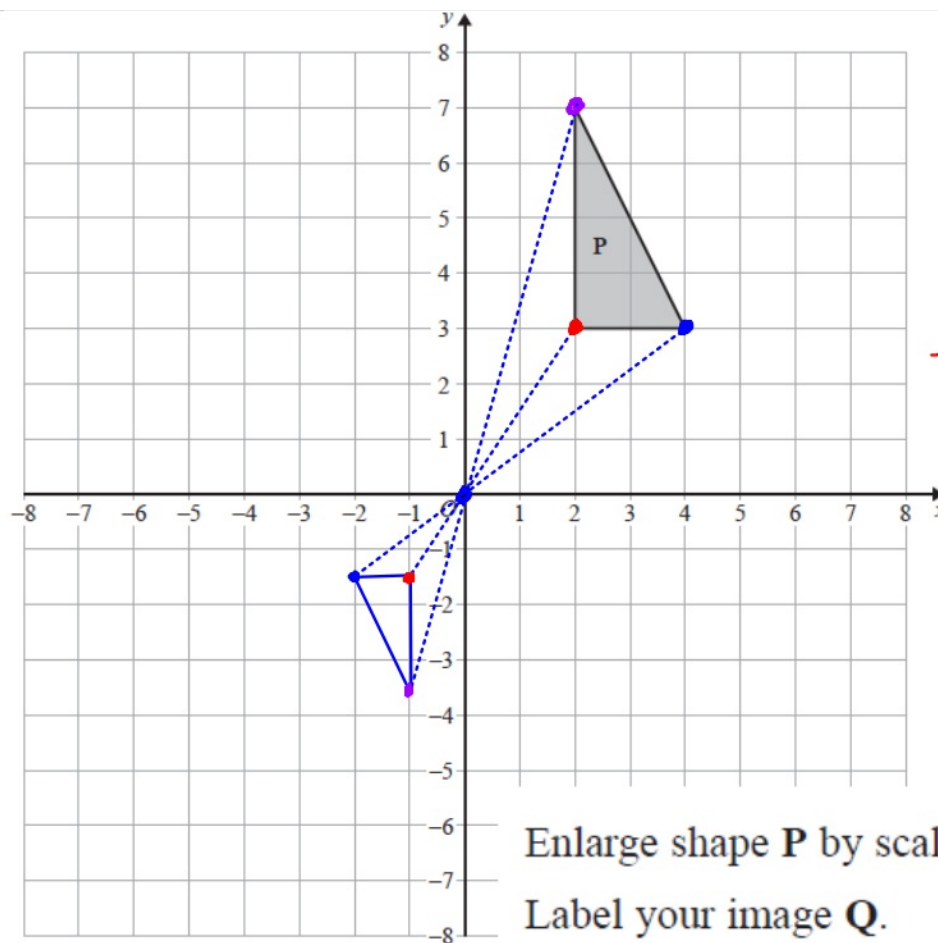


Enlarge shape **P** by scale factor $-\frac{1}{2}$ with centre of enlargement (0, 0).
Label your image **Q**.

(Total for Question 18 is 2 marks)

18

Created by W Neill



$R2$ $U3$
 $-\frac{1}{2} \rightarrow L1$ $D1.5$

$-\frac{1}{2} \rightarrow R4$ $U3$
 $L2$ $D1.5$

$R2$ $U7$
 $-\frac{1}{2} \rightarrow L1$ $D3.5$

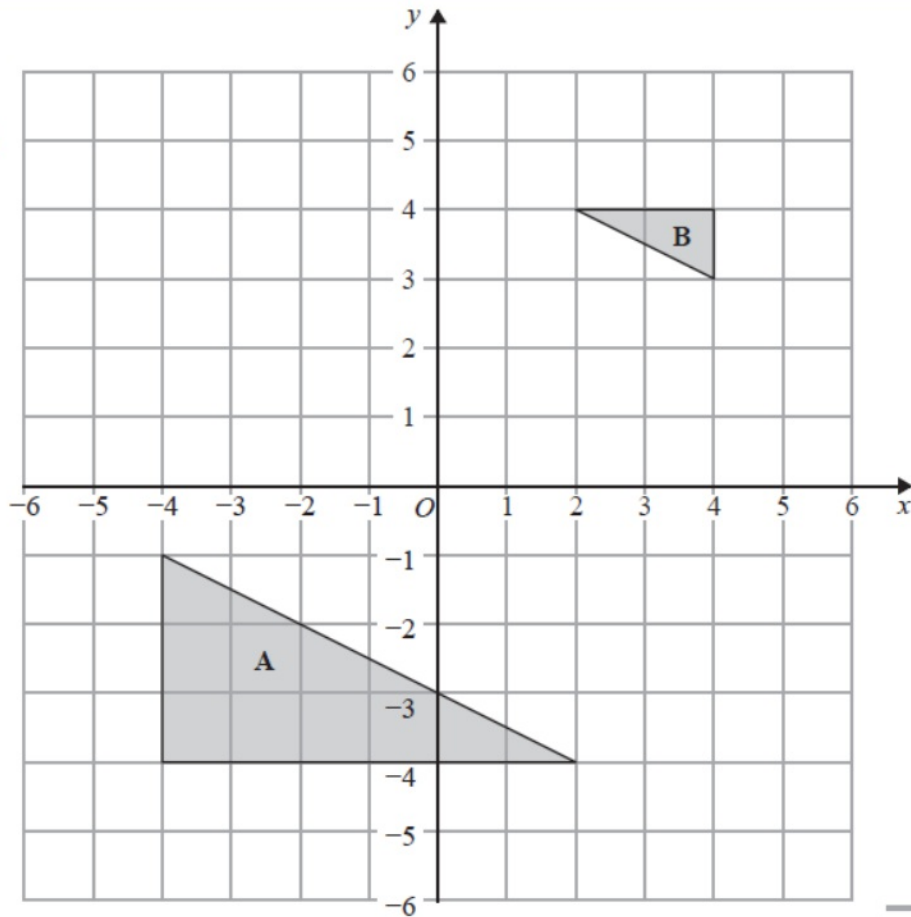
Enlarge shape **P** by scale factor $-\frac{1}{2}$ with centre of enlargement (0, 0).
 Label your image **Q**.

(Total for Question 18 is 2 marks)

13

G54

Video Created by W Neill



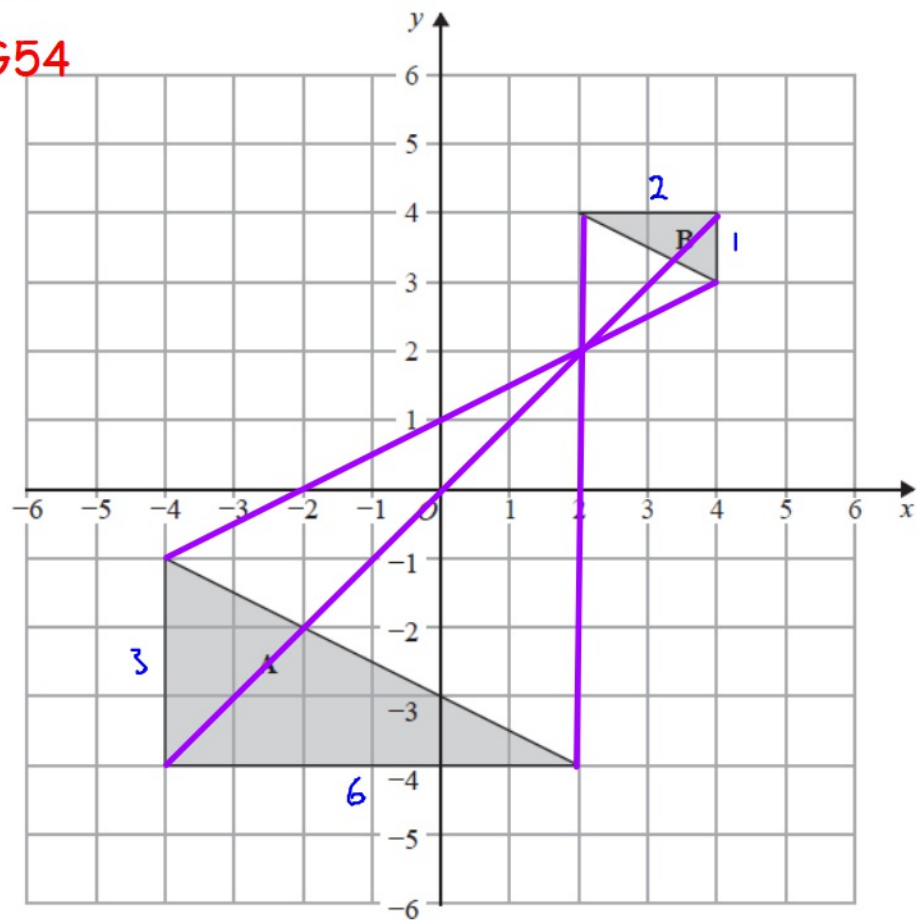
(Total for Question 13 is 2 marks)

Describe fully the single transformation that maps triangle A onto triangle B.

13

G54

Video Created by W Neill



enlargement
Sf $-\frac{1}{3}$
from (2,2)

(Total for Question 13 is 2 marks)

Describe fully the single transformation that maps triangle A onto triangle B.

AQA

21 (b) This diagram shows triangles CDE and PQR .

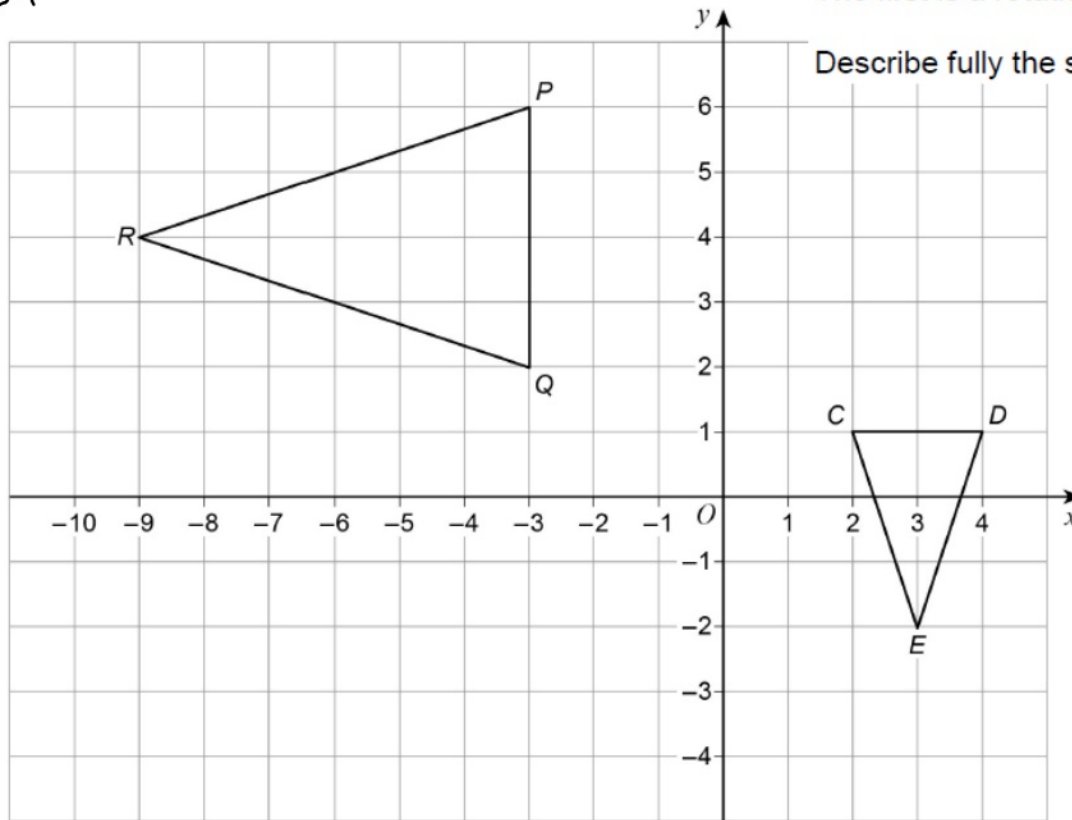
G40
G54

Video created by W Neill

CDE is mapped to PQR by combining two single transformations.

The first is a rotation of 90° anticlockwise about E .

Describe fully the second transformation.

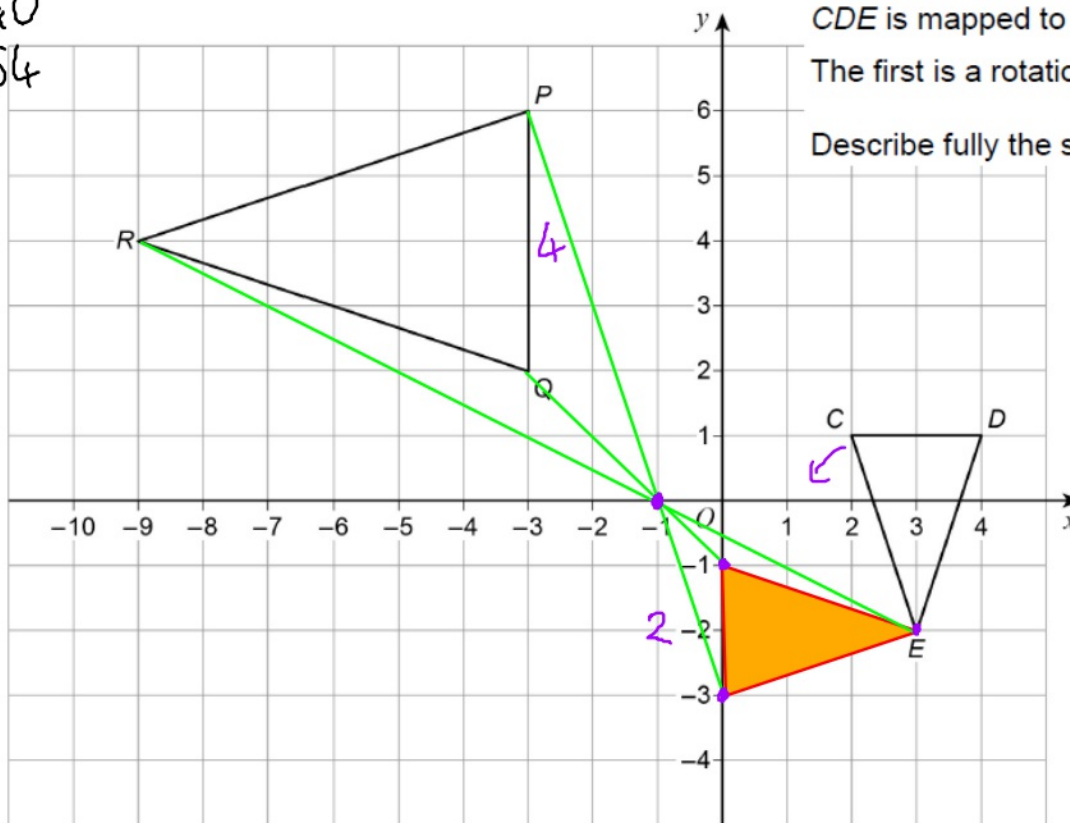


[3 marks]

21 (b) This diagram shows triangles CDE and PQR .

Video created by W Neill

G40
G54



CDE is mapped to PQR by combining two single transformations.

The first is a rotation of 90° anticlockwise about E .

Describe fully the second transformation.

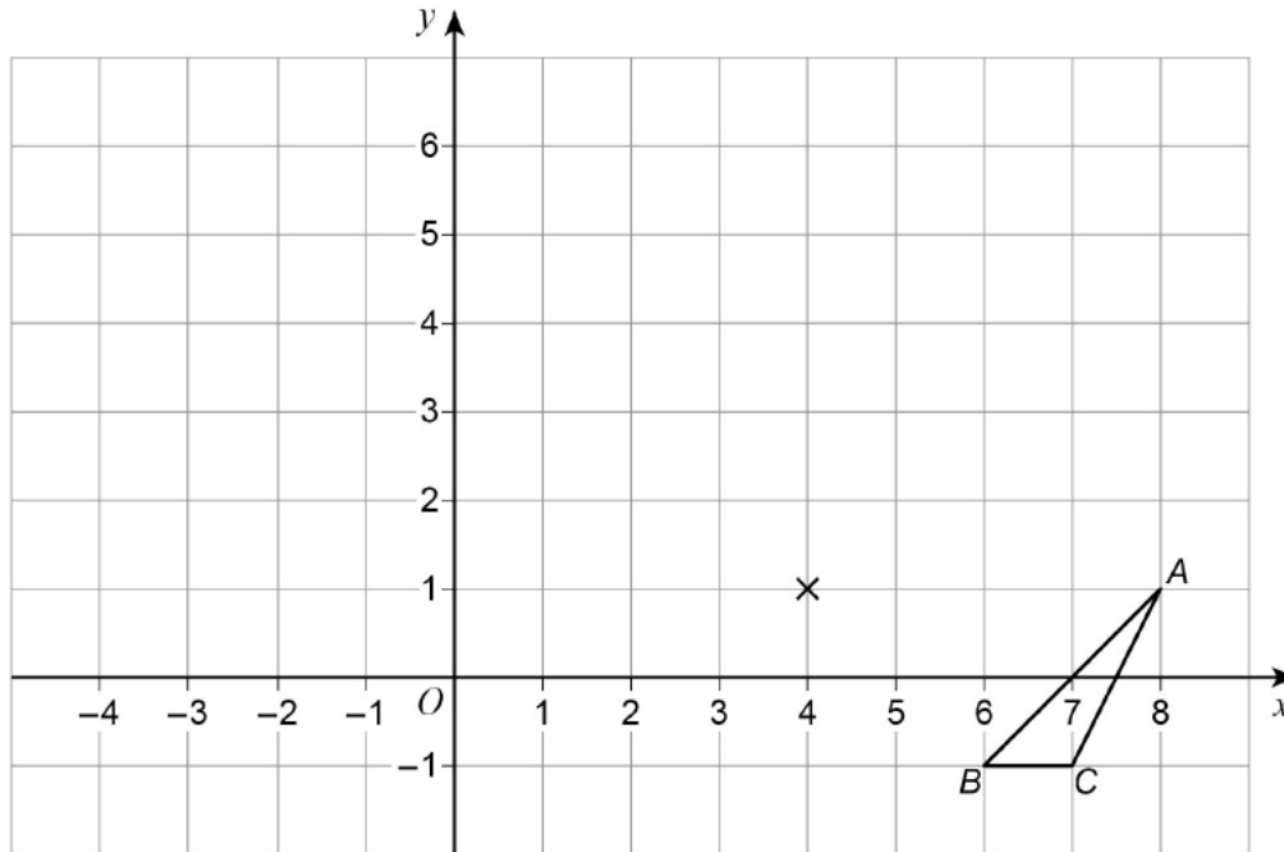
Enlargement
by Sf -2
centre (-1,0) ✓

[3 marks]

21 Enlarge triangle ABC by scale factor -2 , centre $(4, 1)$

[2 marks]

G54



21 Enlarge triangle ABC by scale factor -2 , centre $(4, 1)$

[2 marks]

G54

